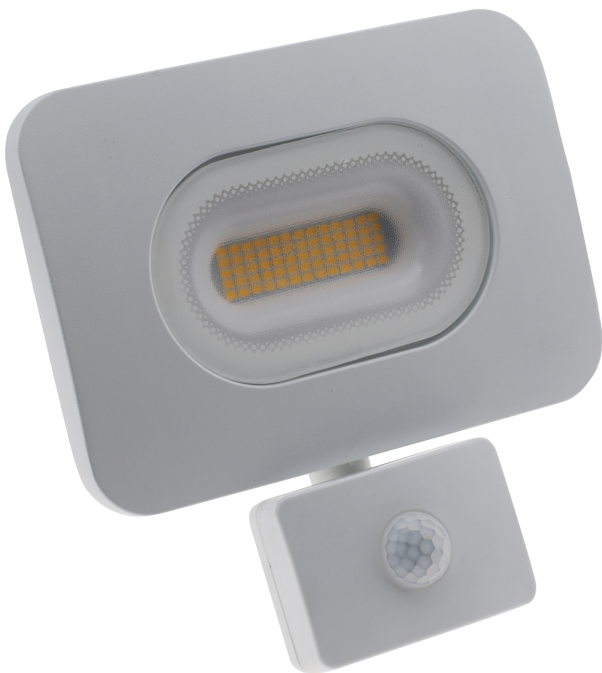


Product Data Sheet

30W PIR IP65 LED slimline flood light white finish

Part No: **CULVER30-PIR-W**

- Features a quick fix bracket design allowing fixing without removing bracket from floodlight
- Slimline design
- 1 metre bare ended input lead
- External adjustable PIR Sensor: 180° detection angle & adjustable lux, time and sensitivity settings



Technical Specification

Part No	CULVER30-PIR-W
Lumens	2400
CCT	4000
Colour Temperature	Neutral White

Finish	White
Voltage	240
Wattage	30
CRI	80
IP Rating	54
Dimmable	N
Lamp Holder	Integrated LED
Connector Type	Bare End
Length	180
Width	175
Depth	60
Class 1 or 2 or 3	I
Material / Made From	Metal
EAN	5055530823983
Unit of sale	1
Price	each
Notes	