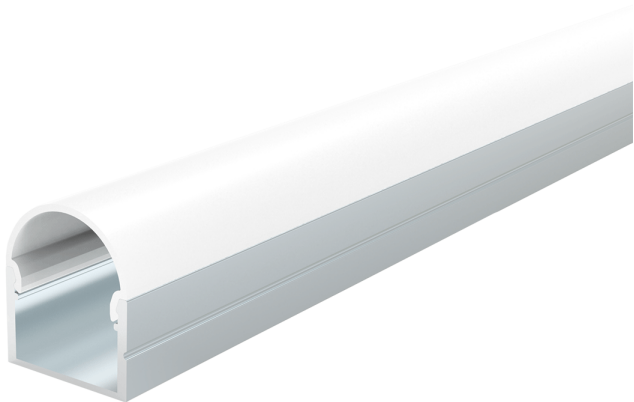


Product Data Sheet

JXSDM 10 x 19.5mm surface mount profile

Part No: JXSDM-PROFILE

- 10mm x 19.5mm surface mount profile
- Fits 16mm wide LED tape
- Opal diffuser available
- Fixing clips available
- End caps available
- Available in 2.5m lengths



Technical Specification

Part No	JXSDM-PROFILE
Width	19.5
Internal Width	16.5

Depth	10
Material / Made From	Aluminium
Unit of sale	2.5
Price	per meter
Finish	Aluminium
Notes	Bespoke service NOT available through online ordering, sold in stock lengths only.