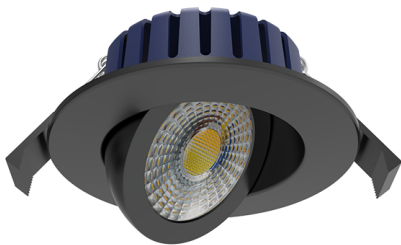


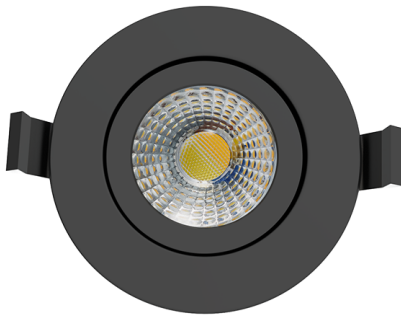
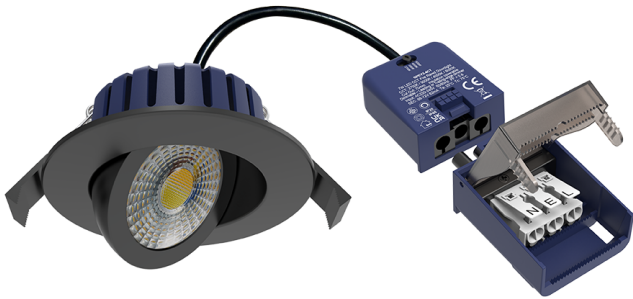
Product Data Sheet

SPEY2 Black 7W CCT tilt IP65 dimmable fire rated 4 colour temperature switchable

Part No: **SPEY2-BK-4CT**

- Colour temperature switchable between 2700, 3000, 4000 and 6000K
- IC Coverable
- 60° Beam Angle
- 0-100% Dimmable
- 30,60,90 minute fire rated - timber joist
- Engineered joist tested including i-joist & posi joist - details on request





Technical Specification

Part No	SPEY2-BK-4CT
Lumens	730-768
CCT	2700-6000
Colour Temperature	CCT

Finish	Black
Voltage	240
Wattage	7
CRI	80
IP Rating	65
Dimmable	Y
Lamp Holder	Integrated LED
Depth	36.5
Diameter	90
Cut Out	70
Class 1 or 2 or 3	II
EAN	5055530838581
Unit of sale	1
Price	each
Notes	