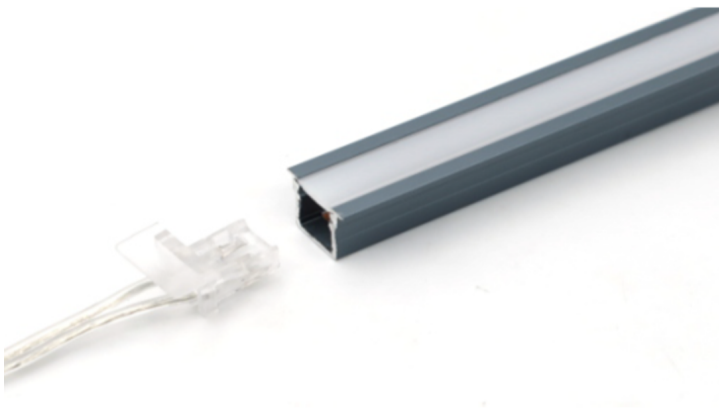


Product Data Sheet

Swift Recessed 12V 30W 4K LED & Profile System

Part No: **SS-RCT10-4K**

- Pre-assembled
- Plug & play
- Cut to exact size needed (no dark spots)
- 10W p/m (30W total)
- Supplied as 3 metre length
- Sold in packs of 10 only (30mtrs)



Technical Specification

Part No	SS-RCT10-4K
Finish	Titanium

CCT	4000
Colour Temperature	Warm White
Voltage	12
Wattage	30
CRI	90
IP Rating	20
Dimmable	Y
Width	12.4
Depth	10
Cut Point	Any Length
Class 1 or 2 or 3	III
EAN	5055530833326
Unit of sale	10
Price	each
Notes	