

Product Data Sheet

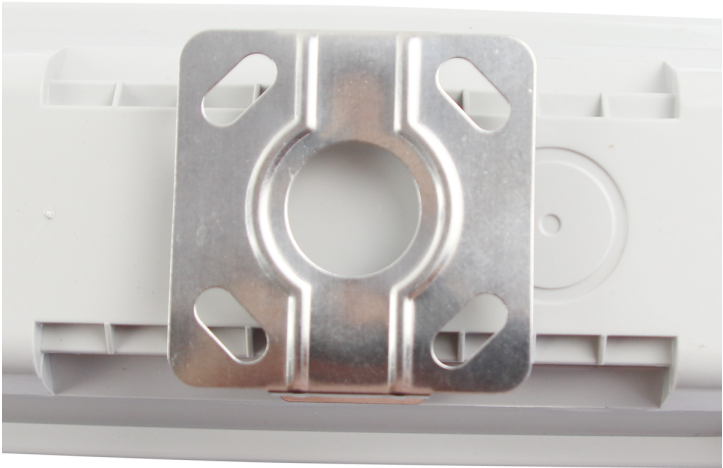
Taurus 5ft 30W single non corrosive LED batten

Part No: TA-5S

- Easy install
- Stainless steel clips
- Ideal for car parks, underpasses, workshops and industrial & storage facilities
- One knock out gland on single versions
- Three knock out glands on twin versions
- Microwave sensor module available (MW)
- 3hr emergency versions available (EM)
- Microwave & emergency version available (MWEM)









Technical Specification

| | |
|-----------------------------|----------------|
| Part No | TA-5S |
| Lumens | 3450 |
| CCT | 4000 |
| Colour Temperature | Neutral White |
| Finish | White |
| Voltage | 240 |
| Wattage | 30 |
| CRI | 80 |
| IP Rating | 65 |
| Dimmable | N |
| Lamp Holder | Integrated LED |
| Length | 1524 |
| Width | 88 |
| Depth | 73 |
| Class 1 or 2 or 3 | I |
| Material / Made From | Plastic |

| | |
|---------------------|---------------|
| EAN | 5055530825390 |
| Unit of sale | 1 |
| Price | each |
| Notes | |