

Product Data Sheet

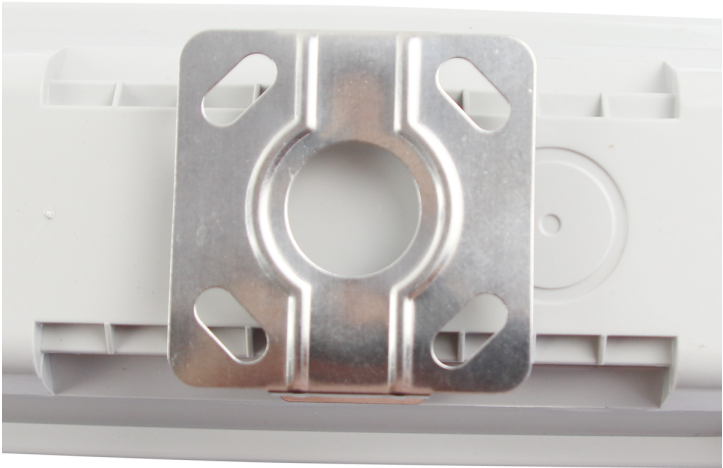
Taurus 5ft 60W twin non corrosive LED batten with microwave & 3hr emergency pack

Part No: TA-5T-MWEM

- Easy install
- Stainless steel clips
- Ideal for car parks, underpasses, workshops and industrial & storage facilities
- One knock out gland on single versions
- Three knock out glands on twin versions
- Microwave sensor module available (MW)
- 3hr emergency versions available (EM)
- Microwave & emergency version available (MWEM)









Technical Specification

Part No	TA-5T-MWEM
Lumens	6900
CCT	4000
Colour Temperature	Neutral White
Finish	White
Voltage	240
Wattage	60
CRI	80
IP Rating	65
Dimmable	N
Lamp Holder	Integrated LED
Length	1524
Width	118
Depth	73
Class 1 or 2 or 3	I
Material / Made From	Plastic

EAN	5055530825468
Unit of sale	1
Price	each
Notes	