

## Product Data Sheet

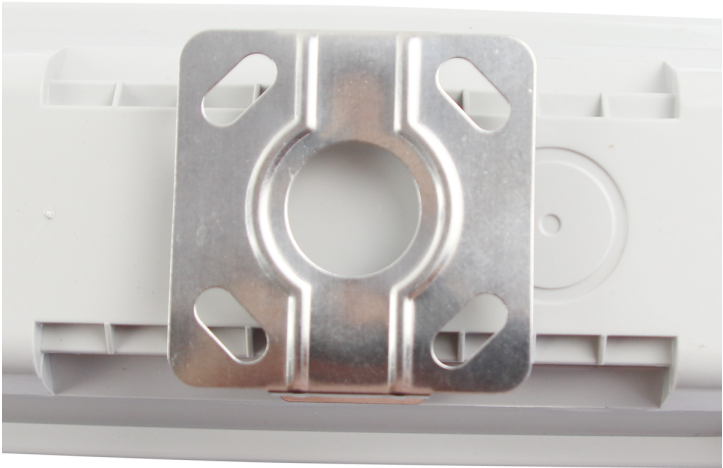
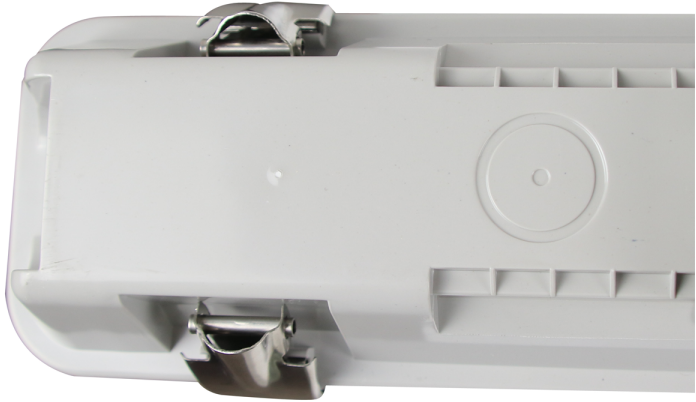
### Taurus 6ft 35W single non corrosive LED batten with microwave & 3hr emergency pack

Part No: TA-6S-MWEM

- Easy install
- Stainless steel clips
- Ideal for car parks, underpasses, workshops and industrial & storage facilities
- One knock out gland on single versions
- Three knock out glands on twin versions
- Microwave sensor module available (MW)
- 3hr emergency versions available (EM)
- Microwave & emergency version available (MWEM)









## Technical Specification

|                             |                |
|-----------------------------|----------------|
| <b>Part No</b>              | TA-6S-MWEM     |
| <b>Lumens</b>               | 4025           |
| <b>CCT</b>                  | 4000           |
| <b>Colour Temperature</b>   | Neutral White  |
| <b>Finish</b>               | White          |
| <b>Voltage</b>              | 240            |
| <b>Wattage</b>              | 35             |
| <b>CRI</b>                  | 80             |
| <b>IP Rating</b>            | 65             |
| <b>Dimmable</b>             | N              |
| <b>Lamp Holder</b>          | Integrated LED |
| <b>Length</b>               | 1828           |
| <b>Width</b>                | 88             |
| <b>Depth</b>                | 73             |
| <b>Class 1 or 2 or 3</b>    | I              |
| <b>Material / Made From</b> | Plastic        |

|                     |      |
|---------------------|------|
| <b>Unit of sale</b> | 1    |
| <b>Price</b>        | each |
| <b>Notes</b>        |      |