

Product Data Sheet

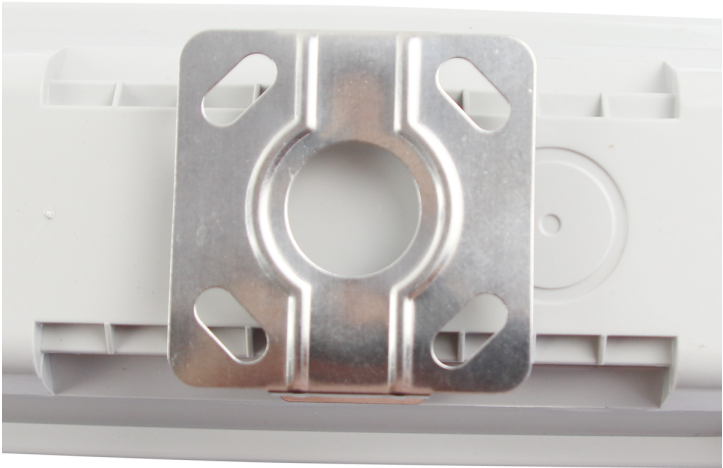
Taurus 6ft 35W single non corrosive LED batten

Part No: TA-6S

- Easy install
- Stainless steel clips
- Ideal for car parks, underpasses, workshops and industrial & storage facilities
- One knock out gland on single versions
- Three knock out glands on twin versions
- Microwave sensor module available (MW)
- 3hr emergency versions available (EM)
- Microwave & emergency version available (MWEM)









Technical Specification

Part No	TA-6S
Lumens	4025
CCT	4000
Colour Temperature	Neutral White
Finish	White
Voltage	240
Wattage	35
CRI	80
IP Rating	65
Dimmable	N
Lamp Holder	Integrated LED
Length	1828
Width	88
Depth	73
Class 1 or 2 or 3	I
Material / Made From	Plastic

EAN	5055530825475
Unit of sale	1
Price	each
Notes	