

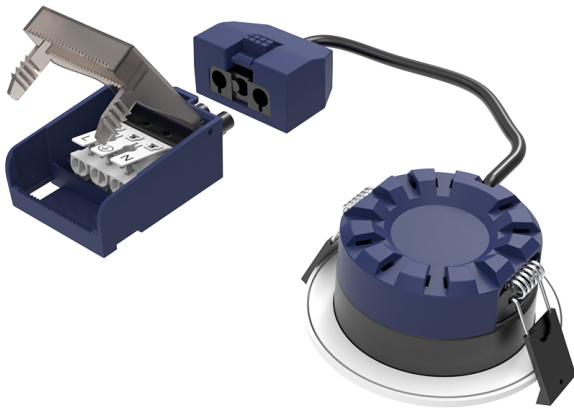
Product Data Sheet

TOPAZ 5W/7W CCT LED fixed IP65 dimmable fire rated 4 colour temperature switchable

Part No: **TOPAZ-4CT-TW**

- Power switchable 5W / 7W
- Colour temperature switchable between 2700, 3000, 4000 and 6000K
- 550lm - 770lm
- Switched from front under bezel
- Supplied with white bezel, other bezel colours available sold separately
- IC Coverable
- 60° Beam Angle
- 0-100% Dimmable
- 30,60,90 minute fire rated - timber joist
- Engineered joist tested including i-joist & posi joist - details on request





Technical Specification

Part No	TOPAZ-4CT-TW
Lumens	550-770lm
CCT	2700-6000
Colour Temperature	CCT

Finish	White
Voltage	240
Wattage	5 / 7
CRI	80
IP Rating	65
Dimmable	Y
Lamp Holder	Integrated LED
Depth	40
Diameter	87
Cut Out	70
Class 1 or 2 or 3	I
EAN	5055530836518
Unit of sale	1
Price	each
Notes	